

MODISH LOUVERS
Exclusive Edition of in
Wood, Marble & Leather



AML001



AML002



AML003



AML004



AML005



AML006



AML007



AML008





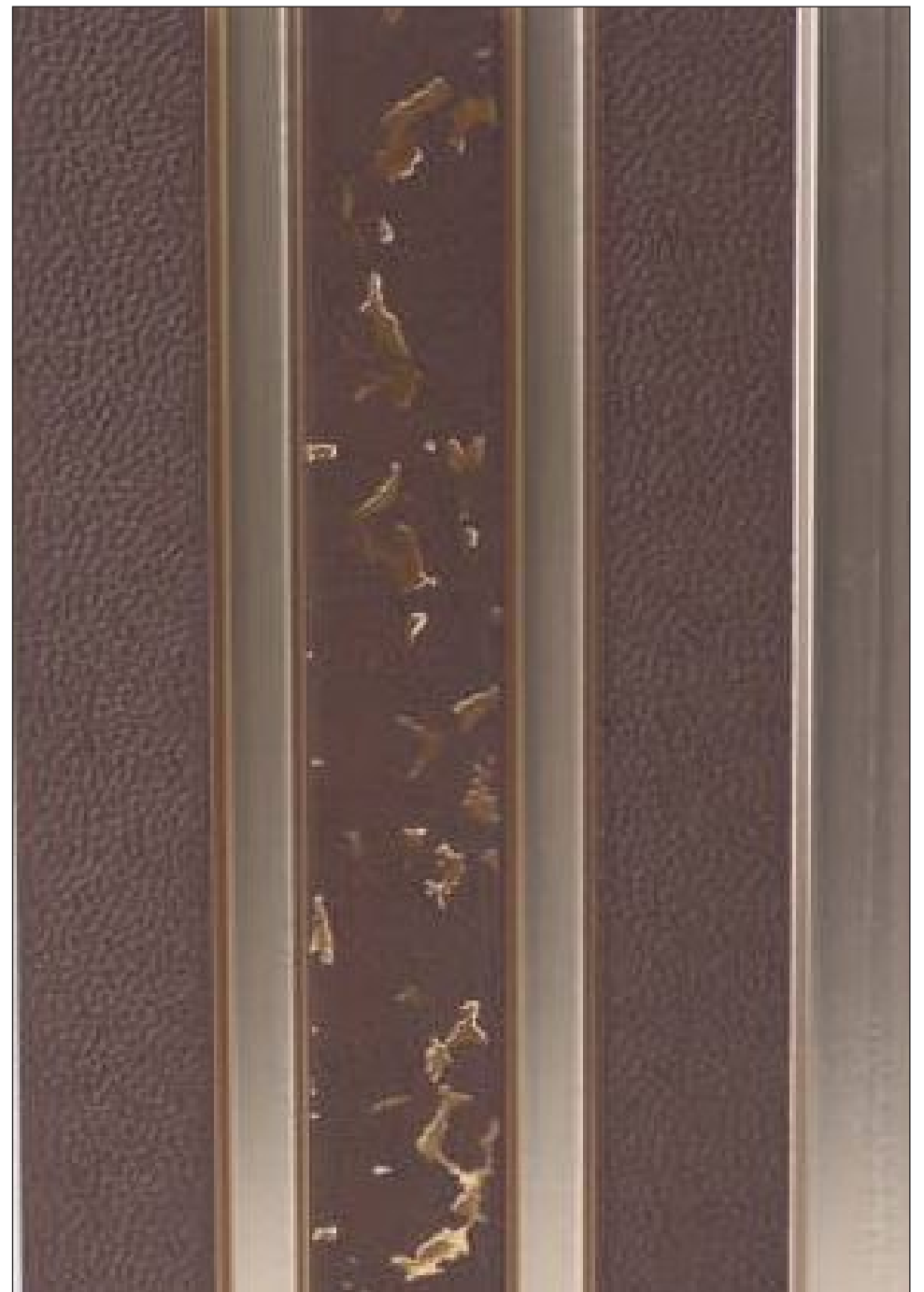
AML009



AML010



AML011



AML012



AML013



AML014



AML015



AML016



AML017



AML018



AML019



AML020





AML021



AML022



ADOX[®]
Bringing Life to Interiors



**MODISH
LOUVERS**



AML023



AML024





AML025



AML026



AML027



AML028



AML029



AML030



AML031



AML032



AML033



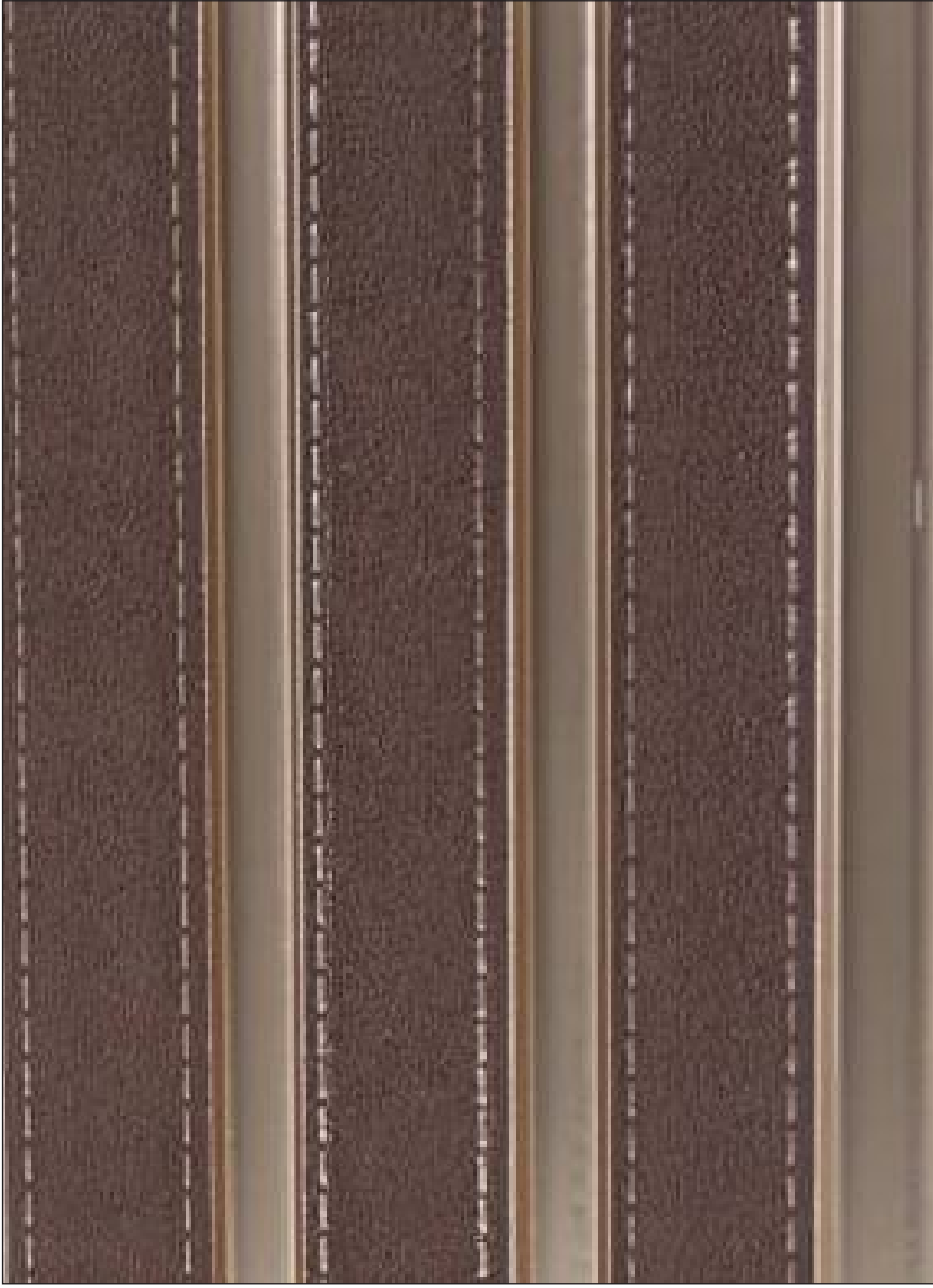
AML034



AML035



AML036



AML037





No Sick House Syndrome



No Atopy



No Formaldehyde



Light Weight



Water Resistant



Termite Resistant



Borer Resistant

SIZES

SIZE : 2.4mtr x 5" (+/- 10%)

SIZE : 2.4mtr x 6" (+/- 10%)

SIZE : 2.9mtr x 5" (+/- 10%)

SIZE : 2.9mtr x 5" (+/- 10%)



SUNSHINE INTERIOR

Plot No.-5, City Enclave, Godown Area, Pabhat Road,
Zirakpur 140603 Punjab, India
Phone : +91 95011 01961, 85588 40543
Email : adoxinterior2021@gmail.com
Website : www.adox.co.in

For Visit Website
Scan QR Code



Follow us on:



We have made our full effort to ensure that information contained in this brochure is accurate at time of publication. ADOX requests that you consult ADOX or authorized dealers, distributors or with company before placing any order to confirm current information on particular product, as ADOX holds right to make changes without any prior notice. ADOX will not be liable for any damage, loss or injury, whatsoever, arising from any errors or omissions from our product or brochure. Images shown in this catalogue is indicative only. If there is any inconsistency between the image and the actual product you receive, the actual product will govern.

ADOX products adds natural beauty to your interiors. Color Variance, Slubs, Weave irregularities and Shading that appears in these panels are to enhance natural beauty and are not imperfections. Utmost care has been taken to give accurate description & technical specification. Errors and omissions, if any please excuse. Technical specifications and product are subject to change without prior intimation. Use same batch material to avoid color variation. ADOX warrants that all products are free from manufacturing defects and perfectly fit for use in normal conditions. No Guarantee/Warranty of the Product after installation. (Dimension Tolerance +/- 5-10%). Do not use any chemical based cleaning product, do use Colin & soft cloth. We advised to use only specific glue pasting not other.